



32X-4Z

TRUCK-MOUNTED CONCRETE PUMP

Placing boom	B4Z 32
Pumping unit	PU1207
Driven by	Gearbox PTO
Chassis	6×4



Technical Specification

BOOM B4Z 32

Maximum vertical reach	m	31.4
Maximum horizontal reach (from center of slewing axis)	m	27.4
Maximum depth reach	m	19.1
Minimum unfolding height	m	7.36
Section numbers		4
Boom type		Z
Pipeline diameter	mm	125

PUMP PU1206

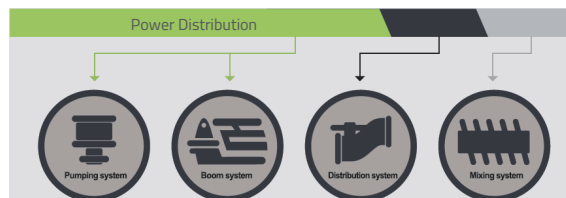
Maximum theoretical output	m ³ /h	120/70
Maximum theoretical pressure on concrete	bar	60/100
Concrete cylinders (diam. × stroke)	mm	230 x 1650
Hydraulic circuit		Open

CHASSIS

Chassis brand	m ³ /h	Sinotruk
Engine power	kW	284/294
Emission standard		Euro 3/4

Product Highlight

● Energy saving



The 4th self-adaptive variable power technology saves fuel by 10%.

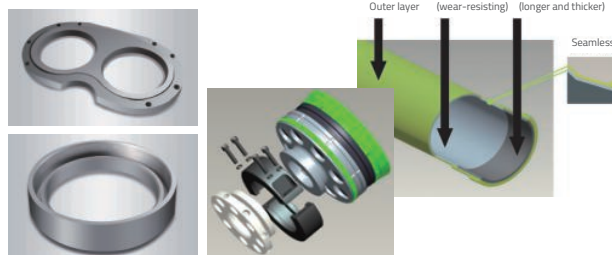
● High reliability: Fatigue optimization design

Service life of boom structure: 8 years or 400,000 m³ without crack, making it equivalent to European standard.

● Intelligence : 3-level fault self-diagnosis

Full self-diagnosis before, after and during pumping to ensure working safely.
With 31 inserted sensors, execute 61 self-diagnosis items.

● Low Maintenance Cost

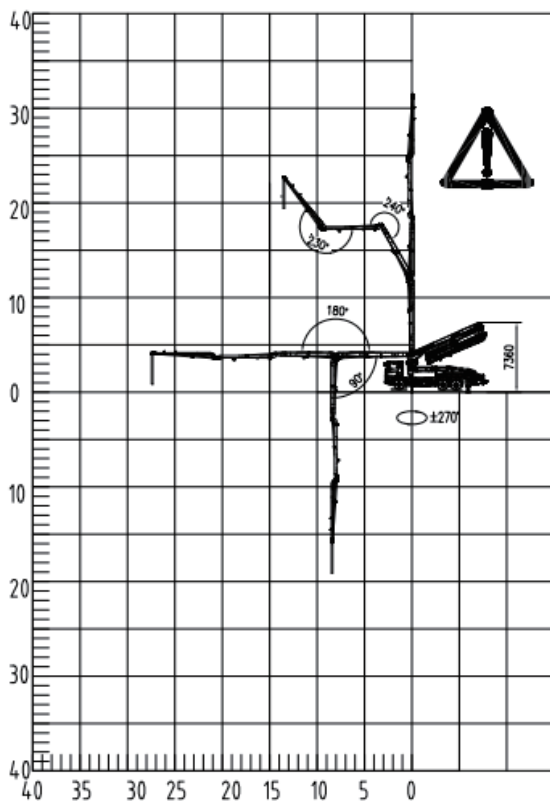


Wearing parts have long service life.

Technical drawing of a truck chassis with a crane, showing dimensions and angles. The drawing includes the following specifications:

- Overall length: 10925
- Wheelbase (front to first rear axle): 1500
- Distance between rear axles: 4600
- Distance from first rear axle to crane base: 1400
- Crane base width: 3252
- Front overhang: 27°
- Rear overhang: 12°
- Overall height: 3940
- Height to crane base: 1443

Dimensions in mm.



Add: 781 Te Atatu Road, Peninsula, Auckland, 0610
Web:lw-equipment.com